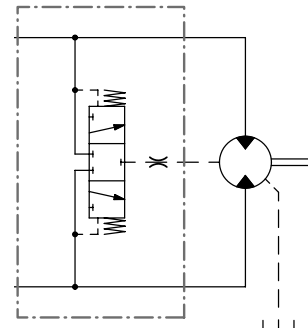




Flushing valve for SUNFAB hydraulic motor SCM

SUNFAB's flushing valve ensures that the oil temperature inside the motor housing remains at the recommended level. Excessively high temperatures reduce the service-life of the shaft seal and the viscosity of the oil deteriorates.

Function:
A small proportion of the motor's return oil flow is flushed through the motor housing and reduces the housing temperature.

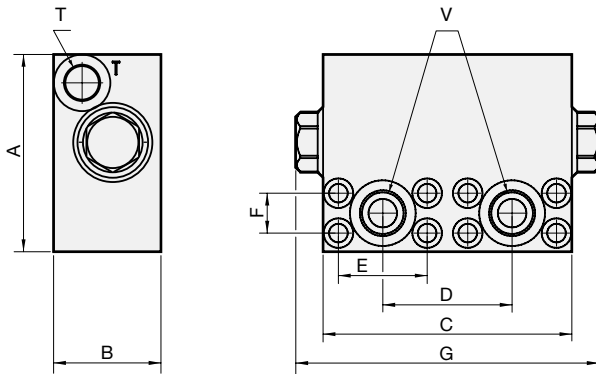


For motor SCM*		025-034	040-064	084-130
Flushing flow	gpm	1.58-2.11	2.11-2.64	2.64-3.17
Flushing pressure	psi	290-435	290-435	290-435
Max. continuous pressure	psi	5000	5000	5000
Max. intermittent pressure	psi	5800	5800	5800
M6 orifice	Ø in	0.067	0.075	0.083
Weight	lb	7.5	11.9	13.7

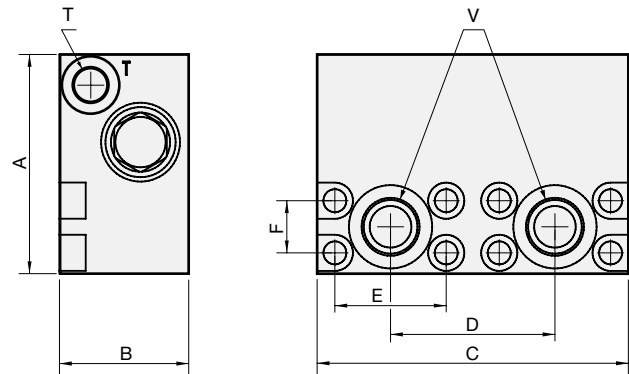
*Only suits SUNFAB motors with V2 back covers whose bolt pattern matches that of the valve.
Subject to design alteration

Dimensions flushing valve

Valve for SCM 025-034

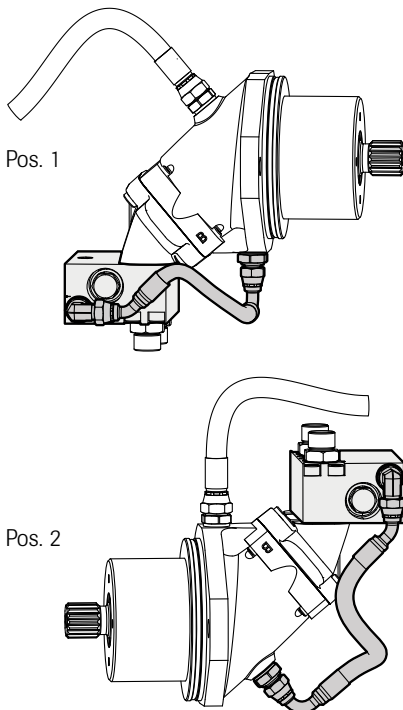


Valve for SCM 040-130

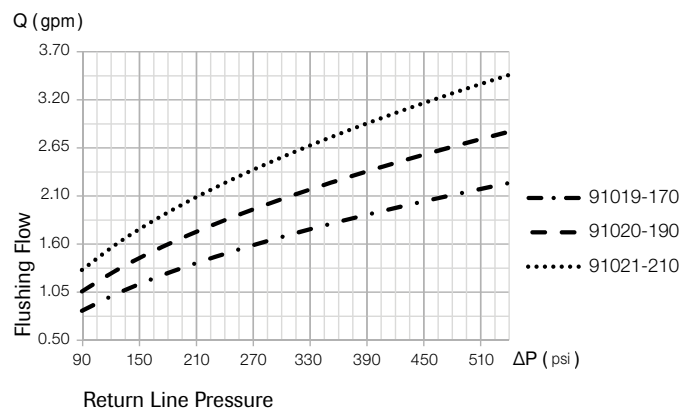


Type SCM	Dimension								
	A	B	C	D	E	F	G	T	V
025-034	3.54	1.93	4.47	2.32	1.59	0.71	5.45		G 1/2"
040-064	3.94	2.32	5.59	2.95	2	0.94	-	G 3/8"	G 3/4"
084-130	4.25	2.32	6.30	3.31	2.25	1.09	-		G 1"

Mounting options



Type SCM	025-034			040-064			084-130			
Valve part no.	91019-170			91020-190			91021-210			
Metric - Bolt kit part no.	50851			50852			50853			
UNC - Bolt kit part no.	51028			50907			51029			
Hose kit	M2	ISO	SAE	M2	ISO	SAE	M2	ISO	SAE-C	SAE-D
Pos 1 part no.	50847	50848	50949	50848	50848	50949	50848	50848	50949	50949
Pos 2 part no.	50847	50848	50948	50849	50849	50950	50849	50850	50950	50952



The drainage pipe should be connected to uppermost drainage outlet. Initial opening pressure 83 psi. Valve fully switched at 135 psi. For requests of other flushing flows, please contact Sunfab Hydraulics.

Sunfab reserves the right to make changes in design and dimensions without notice. Printing and typesetting errors reserved.

© Copyright 2015 Sunfab Hydraulics AB. All Rights Reserved.