



# ANTI-CAVITATION VALVE



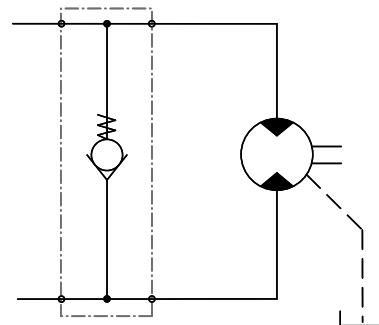
## Anti-cavitation valve for Sunfab's hydraulic motor SCM

Sunfab's anti-cavitation valve is used to minimise the risk of cavitation damage in connection with insufficient inlet pressure.

This can occur, for example, in applications with a relatively large rotating mass with a long run-down time (e.g. fan operations). The hydraulic motor must have a defined direction of rotation when using Sunfab's anti-cavitation valve. The valve can be adapted to both left and right rotation.

### Function:

A check valve between the pressure and return ports opens to ensure a flow of oil to the motor if the inlet pressure to the motor becomes too low. It is therefore important to have a specific back pressure on the return line, which if necessary can be created by means of a back-pressure valve.

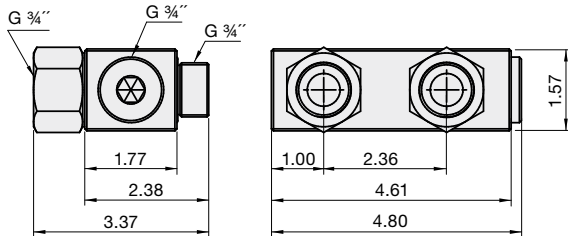


### For SCM Motor

|                            |     | 010-034 S3      | 010-034 K3      | 040-064         | 084-130         |
|----------------------------|-----|-----------------|-----------------|-----------------|-----------------|
| Max. continuous pressure   | psi | 5000            | 5000            | 5000            | 5000            |
| Max. intermittent pressure | psi | <del>5000</del> | <del>5000</del> | <del>5000</del> | <del>5000</del> |
| Weight                     | lb  | 3.52            | 3.75            | 8.60            | 7.50            |

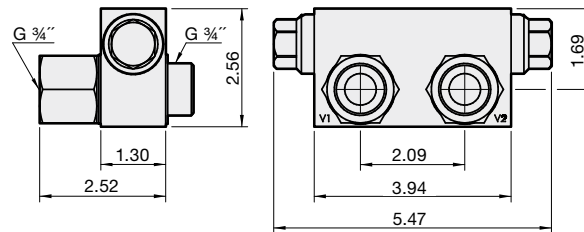
## Dimensions anti-cavitation valve

Valve for SCM 010-034 S3  
Part No. 91199



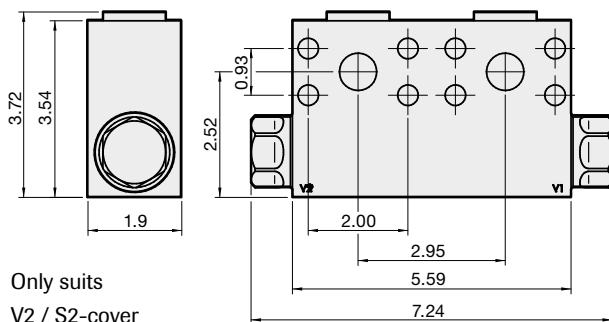
Only suits S3-cover

Valve for SCM 010-034 K3  
Part No. 91024



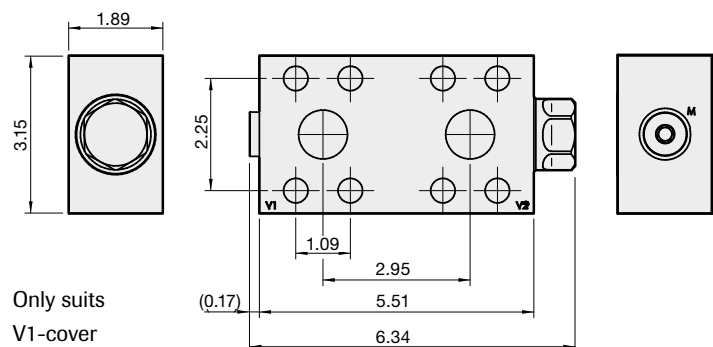
Only suits K3-cover

Valve for SCM 040-064  
Part No. 91025



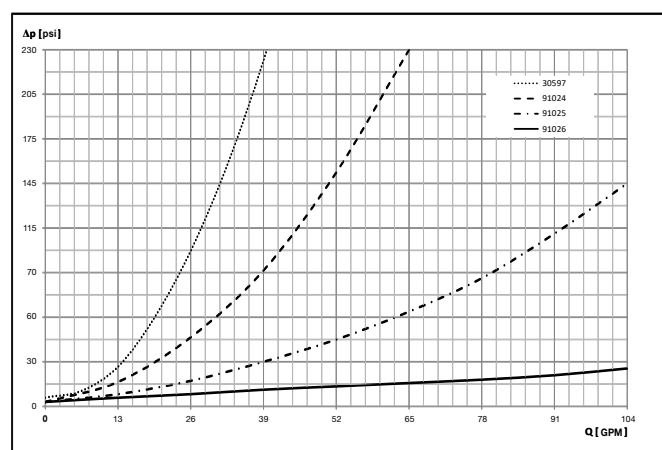
Only suits  
V2 / S2-cover

Valve for SCM 084-130  
Part No. 91026



Only suits  
V1-cover

| Type SCM                   | 010-034 S3 | 010-034 K3 | 040-064   | 084-130   |
|----------------------------|------------|------------|-----------|-----------|
| Valve part no.             | 91199      | 91024      | 91025     | 91026     |
| Metric - Bolt kit part no. | -          | -          | 50854     | 50855     |
| UNC - Bolt kit part no.    | -          | -          | 50982     | 51030     |
| Min-max flange height [in] | -          | -          | 0.63-0.83 | 0.63-0.98 |
| Flange kit part no.        | -          | -          | 50857     | 50858     |
| Flange thread dim.         | -          | -          | G 3/4"    | G 1"      |



Valve opening pressure 4,35 psi